

Pat's Easy Change System

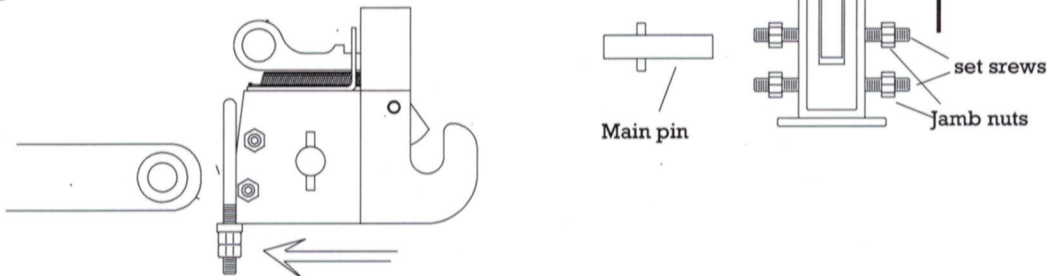
Greenwell MFG, LLC 487 D.E.Brown Road Brandenburg Ky 40108
1-888-243-4204 Fax 270-422-5017
US Patent #7,059,419

For technical Support and Warranty contact Greenwell MFG

Pat's Easy Change System adds 4" of length to your tractors lift arms, some models may require a longer top link.

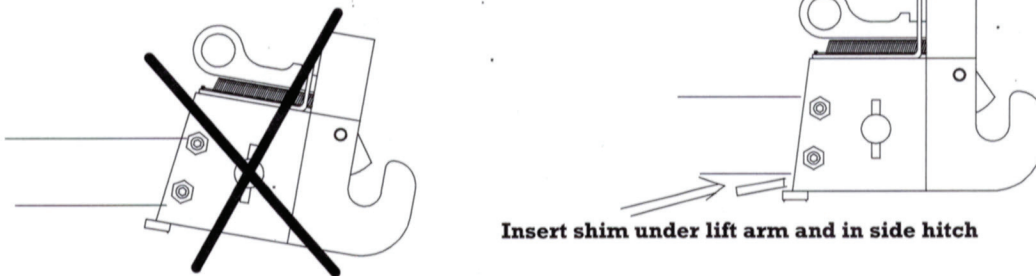
Preparing to install your Pat's Easy Change System on your tractor.

- 1** A. Remove the cotter pin and the main pin from the Easy Change System.
B. Loosen the jamb nuts and setscrews on both sides on the Easy Change System.
C. Slide the Easy Change System over the lift arms.
D. Insert the main pin through the Easy Change System and the ball in the lift arm.
E. Take note to see that the Easy Change System runs parallel with the lift arm.
See installing shims.



Installing shims in your Pat's Easy Change System

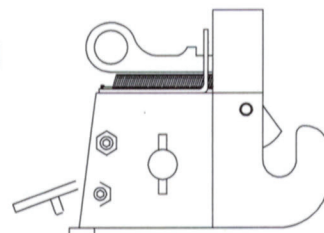
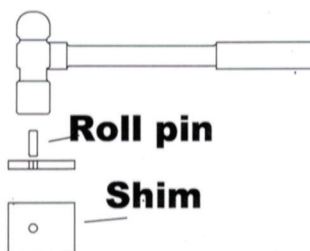
- 2** Category 1 works with lift arms 2" to 3.25" tall
Category 2 works with lift arms 3.25" to 4" tall.
Easy Change System comes with .25" and .375" thick shims (.75" wedge shim category 2 only)
Note if your Easy Change System doesn't run parallel with the lift arm.
A. Insert .25" shim under the lift arm in the backside of the Easy Change System.
B. Repeat step A with .375" shim until the Easy Change System runs parallel with the lift arm.



3 After choosing the shim that best holds the Easy Change System parallel to the lift arm.

- A. Remove the Easy Change System from the lift arm.
B. Take the shims or shims that were needed and use a hammer to drive a .25" roll pin into the hole of the shim or shims.
C. Insert the shim into the back of the hitch with the roll pin inserted in the hole in bottom of the hitch
D. Repeat this for both sides.

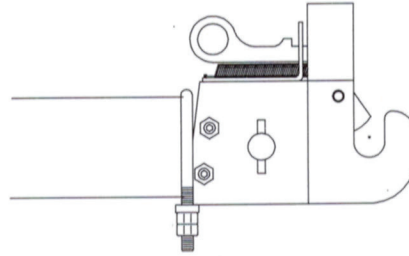
Repeat this for both sides



Note Category 2 lift arms comes in two-ball widths, narrow ball use flat washers inside on the main pin for spacers.)

4

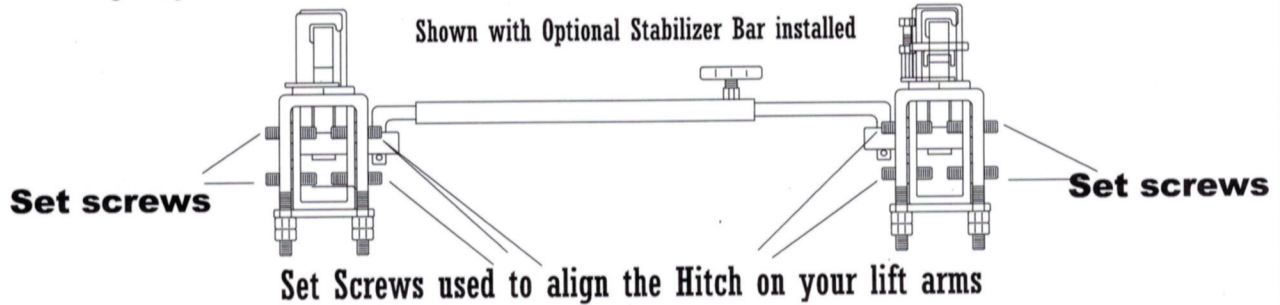
- Slide the Easy Change System on to the lift arm with the shims that are needed inserted in side the back of the hitch.
- Insert the main pin through the Easy Change System and the ball of the lift arm with large hole toward the other lift arm.
- Insert cotter pin in main pin.
- Insert U-Bolt over the top the lift arm and through the holes in the strap on the hitch.
- Install a flat washer with two nuts on both sides of the u-bolt.
- Leave u-bolt, screws, and nuts loose.



5

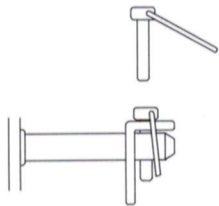
Aligning and adjusting your Easy Change System on your tractor lift arms

- Spread the lift arms apart about (Category 1 26") (category 2 30").
- Something round such as a broom handle run through the hooks this will help hold your hitches square with each other.
- Adjust your setscrews in and out on each side of the lift arms to plumb your hitches.
- Tighten screws and then your jamb nuts.
- Tighten your nuts on the u-bolts.



6

Lynch Pin Washers
Come in Cat-1 Or Cat-2



Lynch Pin Washers
used to protect Lynch Pins
from being damaged while
in use and hooking up.

Lynch Pin Washers



Insert and secure the u-bolt

Optional Stabilizer bar
Model ST 100



Optional Stabilizer Bar is attached between the two Easy Change Systems.
To hold your lift arms at different widths. Shown in Fig-6 this helps in hooking up implements.

Note.

The Optional Stabilizer Bar must be moved when PTO. Implements are used.

Hitch Models

Standard Models

(Have the same category receiver and hook)

Category 1 - Models 102 (Fits lift arms 2"- 3.25" tall)

Category 2 - Models 202 (Fits lift arms 3.25" - 4" tall)

Other Models

(Hitch has different category receiver and hook)

Model 112 Category 1 to 2

(Cat 1 Receiver with a cat 2 hook)

For cat 1 tractors to use cat 2 implements

Model 221 Category 2 to 1

(Cat 2 Receiver with a cat 1 hook)

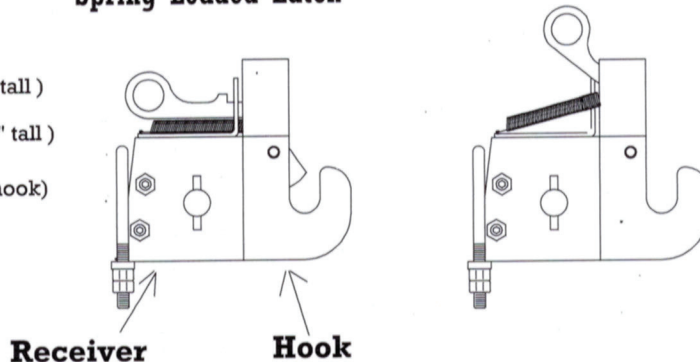
For cat 2 tractors to use cat 1 implements only)

Model 223 Category 2 to 3

(Cat 2 Receiver with a cat 3 hook)

For cat 2 tractors to use cat 3 implements

Spring Loaded Latch Latch Can Be Locked Open



DEFINITION OF CATEGORIES
Category 1 lift arm pins 7/8" diameter
Category 2 lift arm pins 1 1/8" diameter
Category 3 lift arm pins 1 7/16" diameter